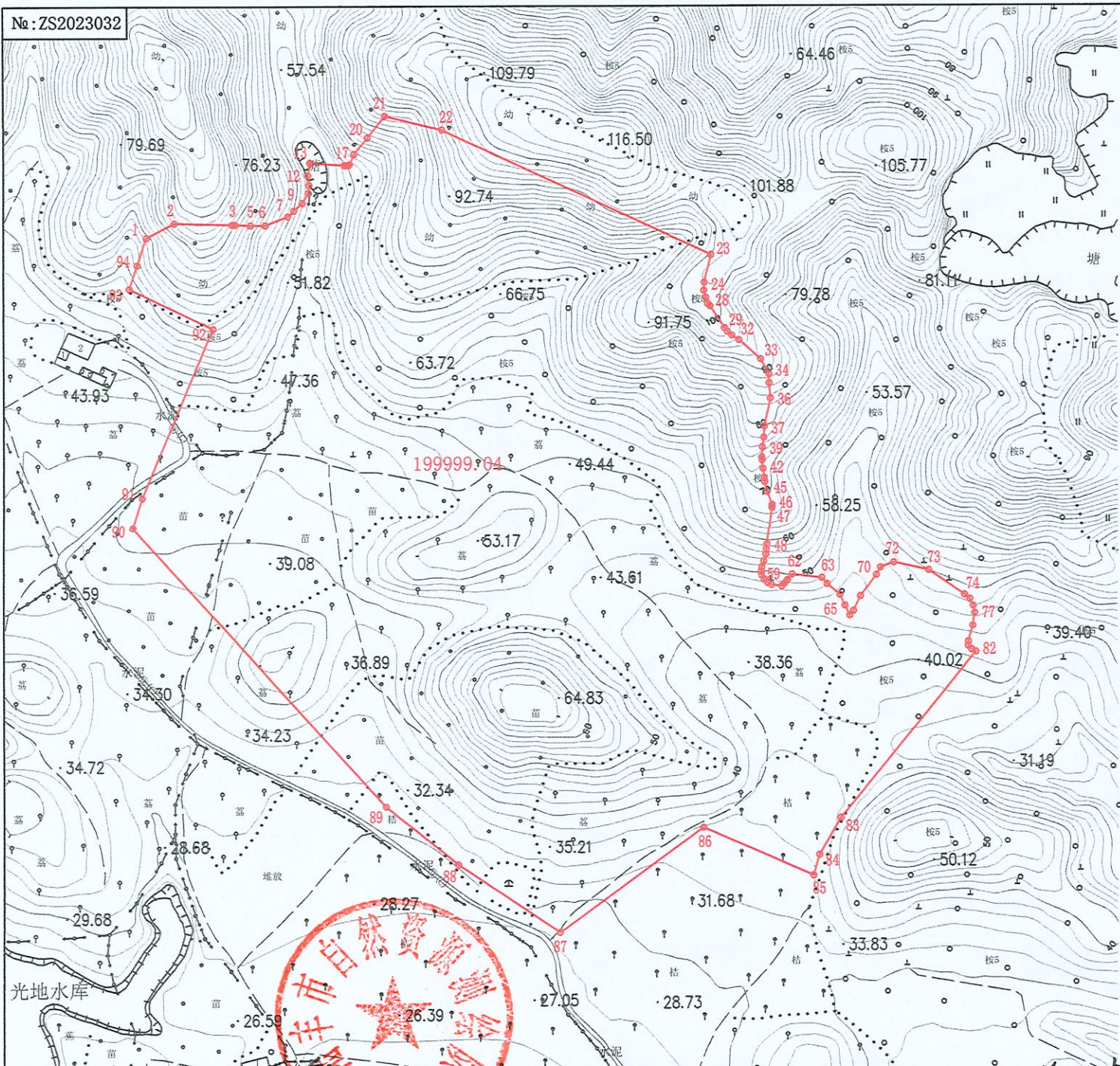


No: ZS2023032



界址点坐标表

点号	X	Y	边长
1	2545062.540	39373229.065	21.92
2	2545072.691	39373248.497	40.98
3	2545071.762	39373289.467	1.96
4	2545071.676	39373291.423	10.74
5	2545071.241	39373302.154	10.30
6	2545071.241	39373312.450	17.08
7	2545077.441	39373328.366	5.87
8	2545081.538	39373332.571	8.14
9	2545087.012	39373338.590	8.16
10	2545094.009	39373342.795	5.68
11	2545099.665	39373343.303	6.71
12	2545106.336	39373342.577	9.06
13	2545115.298	39373343.925	24.22
14	2545113.654	39373368.092	0.93
15	2545113.478	39373369.003	1.44
16	2545113.573	39373370.439	0.75
17	2545113.673	39373371.178	0.86
18	2545114.239	39373371.826	7.83
19	2545121.418	39373374.944	15.06
20	2545133.164	39373384.370	19.55
21	2545148.468	39373396.530	41.22
22	2545138.564	39373436.544	208.56
23	2545050.172	39373625.445	20.07
24	2545030.655	39373620.749	5.86
25	2545024.800	39373620.459	5.11
26	2545019.851	39373621.747	4.63
27	2545015.446	39373623.161	2.36
28	2545013.761	39373624.814	18.51
29	2544998.171	39373634.798	3.32
30	2544995.561	39373636.847	4.17
31	2544992.805	39373639.983	6.07
32	2544989.415	39373645.022	20.24
33	2544975.874	39373660.068	12.16
34	2544965.179	39373665.850	6.27
35	2544958.907	39373665.995	10.77
36	2544948.176	39373666.902	20.06
37	2544928.598	39373662.551	7.95
38	2544920.659	39373662.153	6.86
39	2544913.879	39373661.137	7.15
40	2544906.737	39373660.739	2.12
41	2544904.625	39373660.945	6.11
42	2544898.544	39373661.536	6.28
43	2544892.327	39373662.393	3.02
44	2544889.335	39373662.805	7.06
45	2544882.446	39373664.328	9.78
46	2544873.347	39373667.917	2.17
47	2544871.185	39373667.801	26.21
48	2544845.190	39373664.473	3.52
49	2544841.692	39373664.038	

界址点坐标表

点号	X	Y	边长
49	2544841.692	39373664.038	3.79
50	2544837.903	39373663.839	5.09
51	2544833.045	39373662.316	4.40
52	2544828.840	39373661.029	3.05
53	2544825.831	39373660.521	2.57
54	2544823.275	39373660.829	3.61
55	2544820.139	39373662.624	3.53
56	2544817.709	39373665.180	3.00
57	2544816.368	39373667.863	7.34
58	2544815.284	39373675.120	2.61
59	2544817.202	39373676.890	2.62
60	2544819.178	39373678.612	0.86
61	2544819.883	39373679.100	4.95
62	2544823.702	39373682.249	20.99
63	2544821.238	39373703.089	5.73
64	2544816.894	39373706.619	11.83
65	2544809.208	39373715.809	8.47
66	2544801.522	39373719.362	7.82
67	2544794.464	39373722.725	4.29
68	2544797.863	39373725.344	11.52
69	2544808.281	39373730.268	18.56
70	2544823.155	39373741.374	6.12
71	2544828.508	39373744.348	9.88
72	2544831.993	39373753.598	25.15
73	2544826.463	39373778.137	30.56
74	2544809.092	39373803.277	4.85
75	2544806.005	39373807.024	5.52
76	2544801.047	39373809.455	5.10
77	2544796.037	39373810.395	9.24
78	2544786.889	39373809.070	11.73
79	2544775.559	39373806.024	2.98
80	2544772.585	39373805.825	3.51
81	2544770.007	39373808.205	3.46
82	2544768.379	39373811.257	150.57
83	2544651.582	39373716.227	30.39
84	2544625.252	39373701.054	15.08
85	2544610.752	39373696.905	84.42
86	2544644.846	39373619.680	124.84
87	2544570.928	39373519.078	86.14
88	2544618.840	39373747.495	65.40
89	2544660.175	39373396.818	265.69
90	2544857.570	39373218.980	22.12
91	2544878.671	39373225.624	129.38
92	2544897.955	39373275.717	65.32
93	2545026.530	39373216.980	17.60
94	2545043.250	39373222.468	20.39
1	2545062.540	39373229.065	

S=199999.04 平方米 合299.998亩

坐标系:2000国家大地坐标系
高程基准:1985国家高程基准

测量单位:陆丰市自然资源局测绘队

陆丰市2023年度第六十六批次城镇建设用地图

土地勘测定界图

测量: [Signature]

绘图: [Signature]

审核: [Signature]

日期: 2023.11
比例尺: 1:4000